

Zum
Golden Jubiläum
Der
Evangelisch Lutherischen
St. Marcus Gemeinde
1880 - 1930

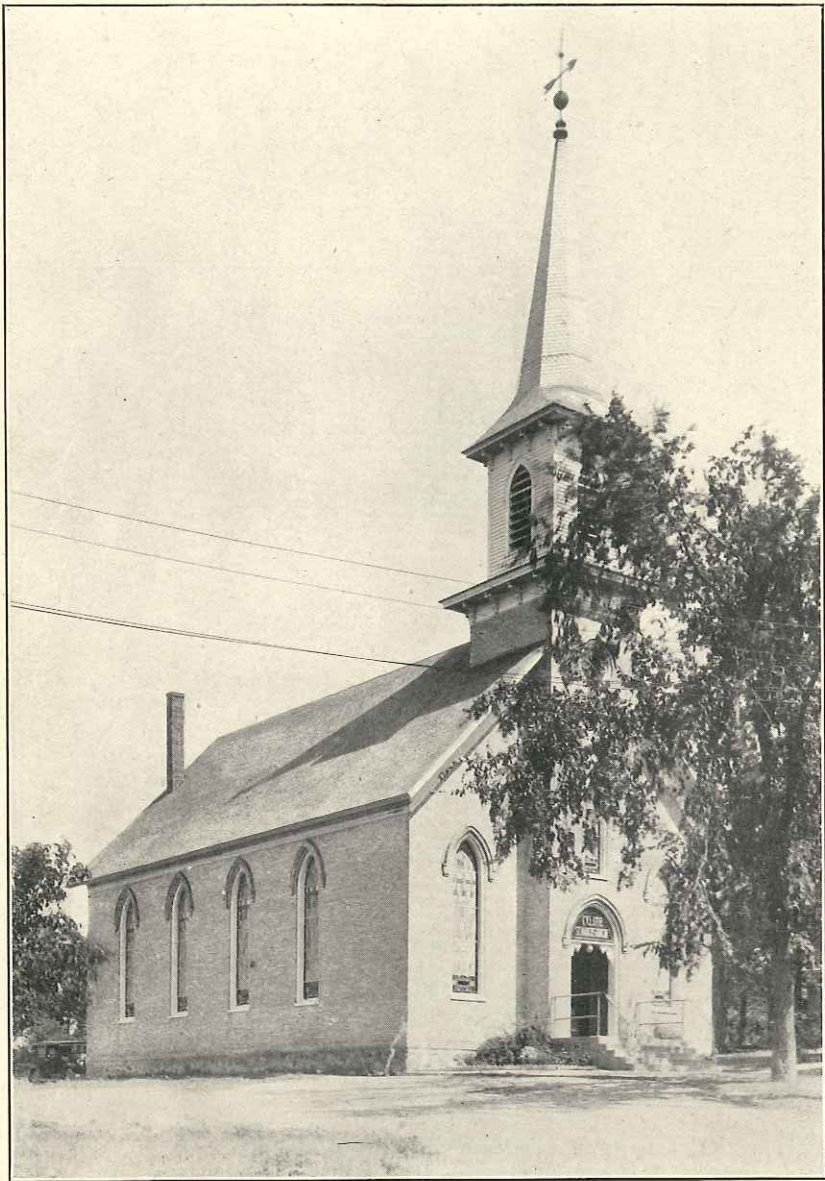


Kurze Geschichte der Gemeinde
auf Beschluß verabsfaßt

von

Pastor G. S. Ritzmann

Symco
Waupaca County
Wisconsin



Kirche der St. Marcus Gemeinde.
Erbaut 1892.

Geschichte der Evangelisch Lutherischen St. Marcus Gemeinde zu Symco, Waupaca County, Wisconsin

Im dreizehnten Kapitel des Evangelisten St. Matthaei wird uns berichtet, daß Jesus die rechtgläubige christliche Kirche auf Erden mit einem Senftkorn vergleicht. Er spricht: „Das Himmelreich ist gleich einem Senftkorn, das ein Mensch nahm und und säete auf einen Acker, welches das kleinste ist unter allem Samen; wenn es aber erwächst, so ist es daß größte unter dem Kobl und wird ein Baum, daß die Vögel unter dem Himmel kommen und wohnen unter seinen Zweigen.“ So verhält es sich, will der Herr sagen, mit dem Wachstum der rechtgläubigen Kirche auf Erden. Sie hat gewöhnlich einen sehr kleinen Anfang.

Blicken wir einmal zurück auf die Geschichte des alten Testaments. Wie gering war die Zahl der Kinder Gottes im Paradies Garten! Nur zwei Personen begannen das Reich Gottes, die Kirche auf Erden zu bauen. Zu Noah's Zeit waren es acht Seelen, und zu Abraham's Zeit war die Zahl nicht viel größer. Aber im Laufe der Zeit wurde, durch Gottes Gnade und Segen, aus diesem geringen Samen ein großer Baum, der seine Zweige über das ganze Volk Israel ausbreitete, und tausende von Menschen fanden Schutz für ihre Seelen unter diesem großen Gottes baum der Kirche.

Nicht viel mehr hervorragender war der Anfang der neutestamentlichen Kirche. Nur zwölf Jünger und einige Weiber bildeten die erste christliche Gemeinde. Aber schon am ersten Pfingsttage wurden dreitausend Seelen hinzugethan. Ein kleines Senftkorn war die Kirche Christi in ihrem Anfang, aber bald wurde sie ein großer Baum. Denn in den folgenden fünfzig Jahren wurde daß süße und seligmachende Evangelium mit Gottes Hilfe von den Aposteln und anderen Jünger Jesu fast über die ganze damalige bekannte Welt verbreitet. An Gottes Segen ist wahrlich alles gelegen.

Auch die Glieder der St. Marcus Gemeinde zu Symco haben hohe Ursache in diese Worte einzustimmen, wenn sie auf ihren geringen Anfang vor fünfzig Jahren zurück blicken. Nur elf Familien waren die Gründer derselben. Aber durch Gottes Segen und der treuen Arbeit seiner Diener am Wort ist aus diesem Senftkorn ein Bau, eine Gemeinde herangewachsen, die heute 150 Familien zählt.

Die ersten Anfänge.

Als die ersten deutsch-lutherischen Ansiedler nach Town Union (village Symco) kamen, fanden sie ganz naturgemäß keine rechtgläubige lutherische Kirche. Sie sahen sich deshalb genötigt, die Gottesdienste der St. Paul's Gemeinde in Manawa zu besuchen. Aber bald klagten sie jedoch darüber, daß der Weg zu schlecht und unter den Umständen, zu weit war, um an den Gottesdiensten regelmäßig teilzunehmen. Deshalb baten sie Pastor J. J.

Walker auch in Symco zu predigen. Er nahm diese Einladung an in Symco und Umgegend eine Gemeinde zu sammeln.

Seine erste Predigt hielt er im Frühjahr 1879 in der Wohnung des Herrn Picruhl. Später wurden die Gottesdienste in einem Schulhause gehalten. Und schon im folgenden Jahre kam es zur Gründung einer neuen Gemeinde.

Gründung der Gemeinde.

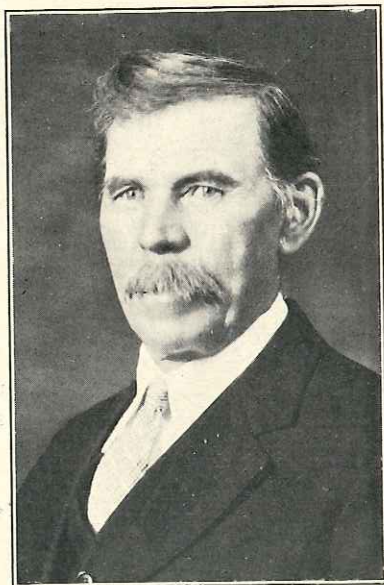
Einige Glieder, die von der St. Paul's Gemeinde zu Manawa entlassen wurden, um in Symco eine Ortsgemeinde zu gründen, baten Pastor J. J. Walker eine Ordnung für diese neue Gemeinde mitzubringen und vorzulegen.

Das geschah am Sonntage nach Ostern 1880. Nachdem diese Ordnung in mehreren Versammlungen beraten worden war, wurde sie zur Annahme empfohlen und am 18 Juli 1880 von den folgenden Herren unterzeichnet, die mit ihren Familien diese neue Gemeinde bildeten. Diese waren die folgenden Herren:

- | | |
|----------------------|---------------------|
| 1. Ludwig Picruhl | 6. Reinhard Koenz |
| 2. Julius Hermann | 7. Julius Fieker |
| 3. Rudolf Tischler | 8. August Hermann |
| 4. Michael Proechel | 9. Gottlieb Hermann |
| 5. Wilhelm Steinbach | 10. Carl Hermann |
| 11. Wilhelm Riese | |



Herr Julius Fieker.

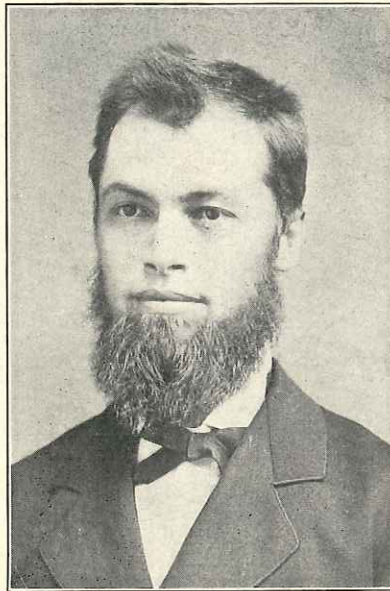


Herr Julius Hermann.

Zusammen 46 Seelen. Zwei dieser Gründer sind noch bei uns und feiern mit uns dieses Jubiläum. Sie sind die Herren Julius Fieker und Julius Hermann.

Kirchbau 1881.

Sogleich in dem folgenden Jahre, nach dem die Gemeinde sich organisiert und Beamte erwählt hatte, dachte man an den Bau einer bescheidenen Kirche, weil es sehr unbequem war in den Wohn- und öffentlichen Schulhäusern Gottesdienst abzuhalten. In der nächsten Versammlung, am 20 Februar 1881 wurde beschlossen, in Symco eine Kirche 20x30x14 zu bauen. Und schon am 3ten Sonntage des Advents, desselben Jahres, gelang es der Gemeinde ihre neue Kirche dem Herrn zu weihen. Welch eine Freude mag wohl bei dieser Gelegenheit, die Herzen der Glieder erfüllt haben? Manches Herz wird wohl an den Bibelspruch gedacht haben: „Wie lieblich sind deine Wohnungen, Herr Zebaoth.“ Ps. 84, 2.



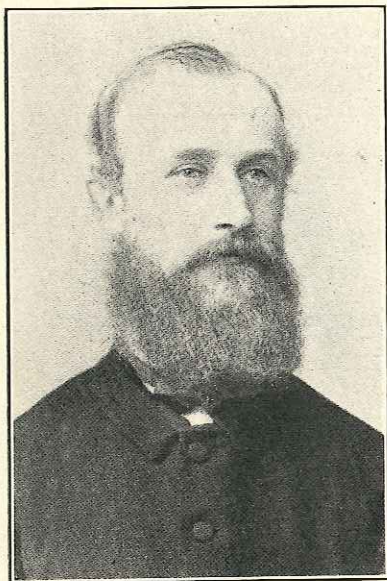
Pastor J. J. Walker,
1879—1884.

Amtstätigkeit des Herrn Pastor J. J. Walker, 1879—1884.

Unter der treuen Führung und Leitung dieses Predigers, blieb Gottes Segen in dieser Gemeinde nicht verborgen. Die Gliederzahl wurde immer größer und größer, so daß aus der kleinen Senfpflanze ein Bäumchen geworden war, eine Gemeinde, die 65 stimmberedigte Glieder zählen durfte. Gott hatte wahrlich in Gnaden gesegnet.

Aber da Pastor Walker 8 oder 9 Plätze zu bedienen hatte, wurde ihm die Arbeit fast zu schwer. Deshalb ermunterte er die Gemeinde dahin zu

wirken, daß sie mit einigen Nachbargemeinden, etwa Manawa und Bear Creek, einen eigenen Pastor berufen sollten, damit sie nicht allein den Gottesdienst haben, sondern auch den Kindern mehr Religionsunterricht gegeben werden könnte. So wurde es für gut befunden, eine neue Parochie zu gründen. Dazu wurden Manawa, Symco und Bear Creek vereinigt, die dann Pastor R. J. Janz im Jahre 1884 beriefen.



Pastor R. J. Janz,
1884—1891.



Pastor D. Jaeger,
1891—1899.

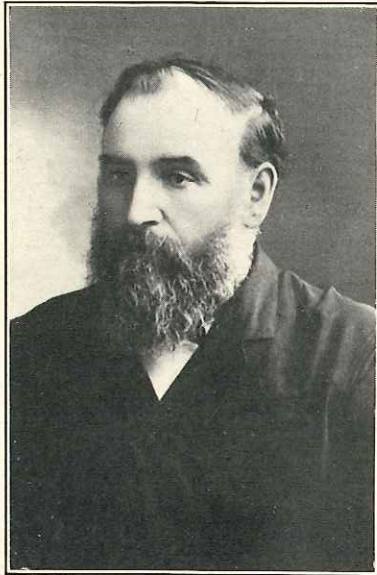
Amtstätigkeit des Herrn Pastor R. J. Janz, 1884—1891.

Pastor Janz wurde etwa im Spätsommer in dieser Parochie eingeführt. Nun wurden in dieser Gemeinde mehr Gottesdienste abgehalten und die Kinder bekamen ein wenig genauern Religionsunterricht. Doch fiel auch dieser Unterricht sehr dürftig aus, obwohl Pastor Janz unter Umständen, sein bestes tat, konnte er unmöglich seiner Aufgabe an diesen drei wachsenden Gemeinden gerecht werden. Die Gliederzahl hatte auch unter seiner Wirksamkeit zugenommen, und zwar in solchem Maße, daß die Gemeinde sich mit dem Gedanken beschäftigte, sobald wie möglich eine größere Kirche zu bauen. Am 20ten Sonntage nach Trinitatis 1890 wurde beschlossen mit dem Neubau zu beginnen. Doch ehe es zur Ausführung dieses Vorhabens gelangte, bekam Pastor Janz einen Beruf nach Orlington, Minn., dem er im Frühjahr 1891 folgte. Manawa wurde selbstständig, Symco und Bear Creek beriefen Pastor D. Jaeger aus Pleasant Plaines, Illinois.

**Amtstätigkeit des Herrn Pastor D. Jaeger,
1891—1899.**

Pastor Jaeger schien der geeignete Mann zu sein, für diese Gemeinde und ihre Verhältnissen. Es dauerte ihm nicht lange die Pläne seines Vorgängers und der neuen Gemeinde gründlich kennen zu lernen, um in Segen und Erfolg weiter zu arbeiten. Denn während seiner Amtstätigkeit, an dieser Gemeinde, ist die jetzt stehende Kirche (\$4,300.00), Schulhaus (\$450), und Pfarrhaus (\$1,480.00) erbaut worden, zur Ehre Gottes und zum wohl der nachkommenden Generation. Gott sei Dank dafür in Zeit und Ewigkeit.

Aber trotz seiner gesegneten Wirksamkeit, sahe die Gemeinde dennoch die Notwendigkeit selbstständig zu werden und ihren eigenen Pastor zu berufen. Pastor Karth wurde daher am 5ten Oktober 1899 als Seelsorger dieser Gemeinde berufen.



Pastor F. L. Karth,
1899—1906.

**Amtstätigkeit des Herrn Pastor F. L. Karth,
1899—1906.**

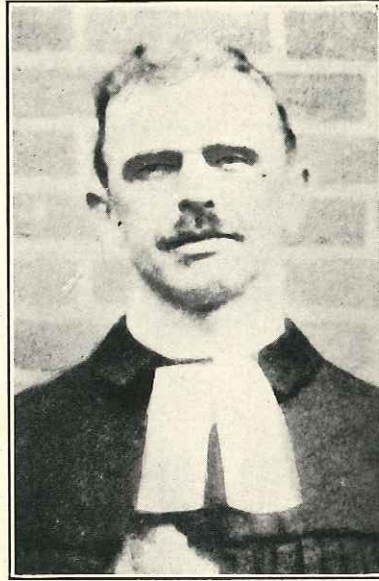
Pastor Karth versuchte sein Amt treu zu verwalten und genauere Seelsorge an den einzelnen Glieder zu üben, welches ihm in seiner gelegneten Wirksamkeit große Schwierigkeit bereitete.

Aber trotzdem ging es in der Gemeinde vorwärts. Er gründete eine Sonntagschule, einen gemischten Singchor, die Kirche wurde geschmückt

und angestrichen. Gottes Segen ruhte auf seiner und der Gemeinde Arbeit. Er bekam einen Beruf an das Altenheim zu Waumatoja, Wis., dem er auch folgte, und nach 14 Tage die Gemeinde verließ. Pastor Jaeger von Bear Creek übernahm die Vakanz, bis ein neuer Pastor berufen wurde. Die Wahl fiel auf Pastor Treff, der auch annahm.



Pastor M. A. Treff,
1906—1919.



Pastor B. D. Richter,
1919—1921.

Amtstätigkeit des Herrn Pastor M. A. Treff, 1906—1919.

Pastor Treff schien ein wenig anders gesinnt zu sein als sein Vorgänger und hatte infolgedessen weniger Schwierigkeiten zu überwinden. Während seiner 13 jährigen Amtstätigkeit sind fast keine Ereignisse zu verzeichnen. Es ging alles im natürlichen Lauf bis die Gemeinde am 22ten Juni 1919 beschloß, daß Pastor Treff mit Pastor B. D. Richter aus Amherst, Wis., wechseln sollte. Treff legte darauf sein Amt nieder und Pastor Richter wurde berufen. Darnach nahm Treff den Beruf nach Amherst an. Dies geschah nach gegebenen Rat des damaligen Missions-direktors Breihahn.

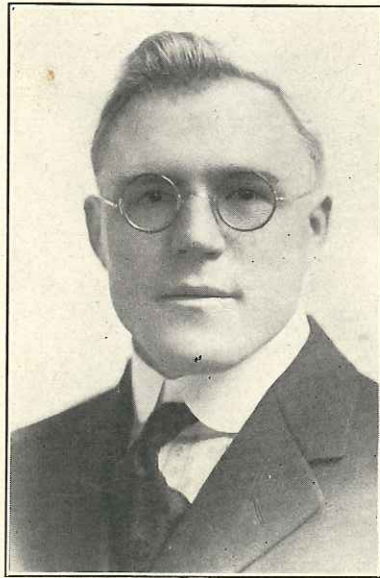
Amtstätigkeit des Herrn Pastor B. D. Richter, 1919—1921.

Ohne Zweifel war Pastor B. D. Richter ein lebhafter und aktiver Mann, der absolut keinen Kirchhofsrieden erdulden konnte. Stillstand ist Rückgang

in jeder Gemeinde. Er dachte: „Ich lebe und meine Gemeinde muß leben, dafür werde ich schon sorgen.“ Er gründete sofort einen Männerverein, einen Frauenverein, einen Singchor und manches andere wurde im Schlaf gestört, ganz besonders sollte und mußte die alte Fuchsharmonika aus der großen Kirche entfernt, und eine neue Pfeifen Orgel angeschafft werden. Das geschah. Eine Orgel wurde für \$3,300.00 gekauft und zum heiligen Dienst eingeweiht.

Es schien alles vorwärts zu gehen, welches der Teufel nicht leiden kann. Er fügte es daher so, daß der Führer der Gemeinde einer Unvorsichtigen Handlung beschuldigt werden konnte und in folgedessen sein Amt nieder legen mußte. Pastor Jaeger wurde wieder als Vakanz Prediger berufen.

Dann wurde Pastor Kamilow berufen, aber er nahm nicht an; darauf wurde Pastor Otto Hatstaett berufen, auch er nahm nicht an. Zum dritten mahl wurde Pastor G. S. Kitzmann erfolgreich berufen und schon am 26 Dezember 1921 von Pastor D. Jaeger eingeführt.



Pastor G. S. Kitzmann,
1921—

Amtstätigkeit des Herrn Pastor G. S. Kitzmann, 1921—

Da es eine Gemeinde nie zur vollkommenheit bringen wird, obwohl jeder treue Pastor und jedes ernstdenkende Gemeindeglied darauf hinwirken, so ist und bleibt immer Raum zur Verbesserung. Daher versuchte der Unterzeichnete manches in der Gemeinde zu heben, das im Merre der Vergessenheit begraben lag.

Church Council



Back row, left to right—Trustees, Ed. Prill, Richard Steinbach, Wm. Schwanke; School Board, Adolph Schuelke, Albert Gruel, Wm. Handrich.
Middle row, left to right—Collector, Gust. Fietzer; Treasurer, Albert Jahsmann; Secretary, Louis Janke; Organist, Leon Quimby.
Bottom row, left to right—President, Leo Preuss; Deacons, Wm. Mundt, Arthur Janke; Gust. Riske, E. E. Quimby, Pastor G. H. Kitzmann.

Die Missionsgaben wurden während seiner Zeit vervierfältigt mit Hilfe der Einführung des Kubertsystems. Die Gemeinde schloß sich gliedlich der Synode an und durfte 1924 ihren ersten Vertreter nach der Distriks—synode in Wausau senden. Die Schule wurde ebenfalls gehoben, so daß neben dem Konfirmanden-Unterricht die Stadtsfächer eingeführt worden sind. Der erste stehende Lehrer Karl Ruhmann wurde 1923 berufen. Genauere Kirchenzucht praxiert, die dem Pastor keine Freude bereitet. Alle Gebäude wurden verbessert, electrisches Licht wurde in alle Gebäuden eingelegt, welches das Eigentum der Gemeinde sehr gehoben hat. Im Jahre 1929 wurde die Kirche neu geschmückt und mit farbigen Fenstern versehen.

Alle das Gute, welches dieser Gemeinde, während den letzten 50. Jahren beschert wurde, ist Gottes Gnade und Segen zu verdanken. Sein Wört ist nicht vergeblich gepredigt worden. Er hat die Arbeit seiner Diener reichlich gesegnet. Sein Heiliger Geist hat durch die Predigt des Worts an den Herzen der Zuhörer gewirkt. Das muß die Gemeinde bekennen zur Ehre Gottes des Vaters.

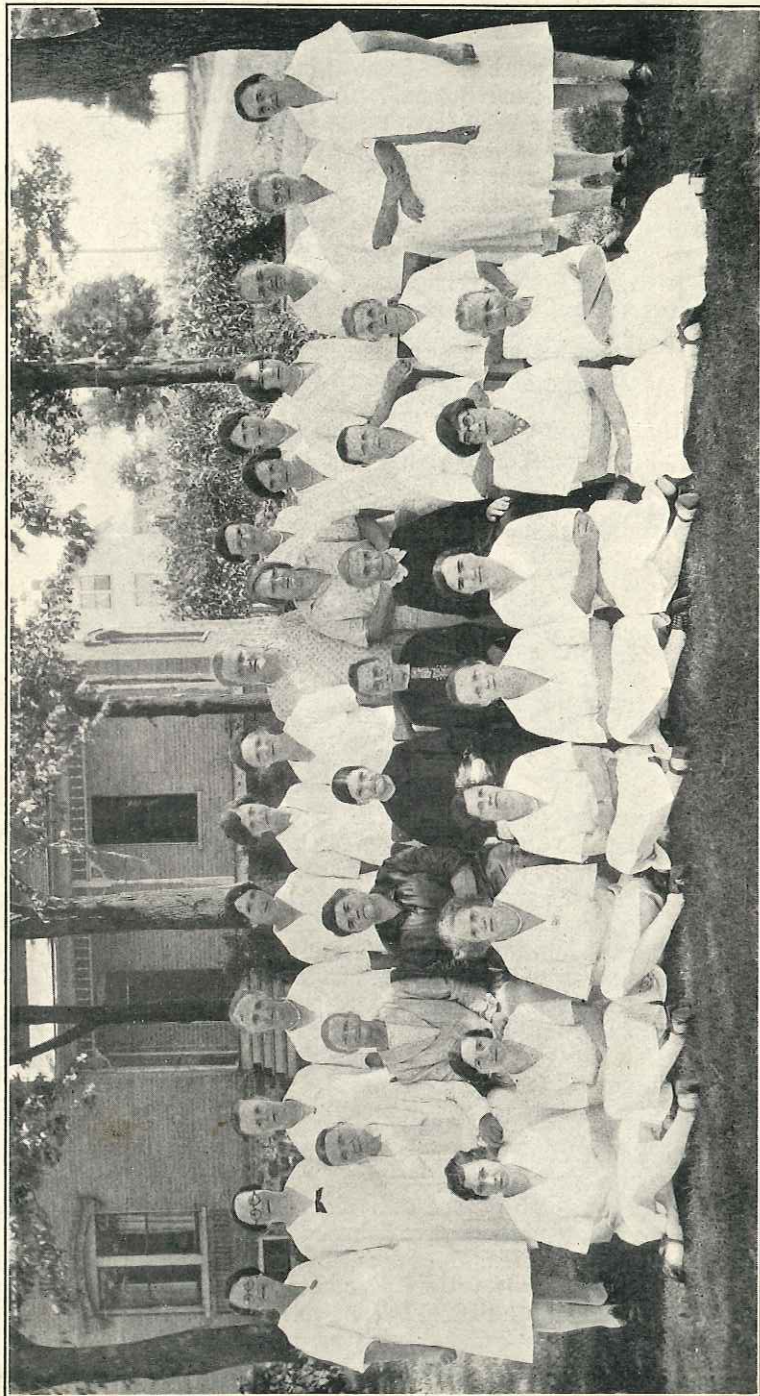
Im Hinblick auf die Zukunft beten wir:

Ach blieb mit deinem Segen
Bei uns, du reicher Herr!
Dein Gnad' und all's Vermögen
In uns reichlich vermeh'r!
Soli Deo Gloria

Frauen Verein

Die gläubigen Frauen im alten und neuen Testament haben stets versucht das zu sein und zu bleiben, wozu Gott sie geschaffen hat, nämlich Gehülfin ihrer Gatten, nicht allein im Irdischen, sondern auch im Geistlichen. Zwar hat Gott dem Manne befohlen sein Reich auf Erden, die Kirche zu bauen und das Weib soll seine Gehülfin sein. Daher ist es auch des Weibes heilige Pflicht ihren Mann im Werk des Herrn kräftig zu unterstützen. Und wenn des christlichen Mannes Weib im Glauben steht, dann wird sie auch reichlich Gelegenheit finden, in und für Gottes Reich zu arbeiten. Wie sich nun die Männer in Gemeinden und Synoden verbinden um das Werk des Herr mehr erfolgreicher zu betreiben, so verbinden sich die Frauen aus Liebe zu ihrem Heilande und seinem Werk in große Frauenvereine, die dann mehr für den Herrn und seine Kirche zu tun vermögen.

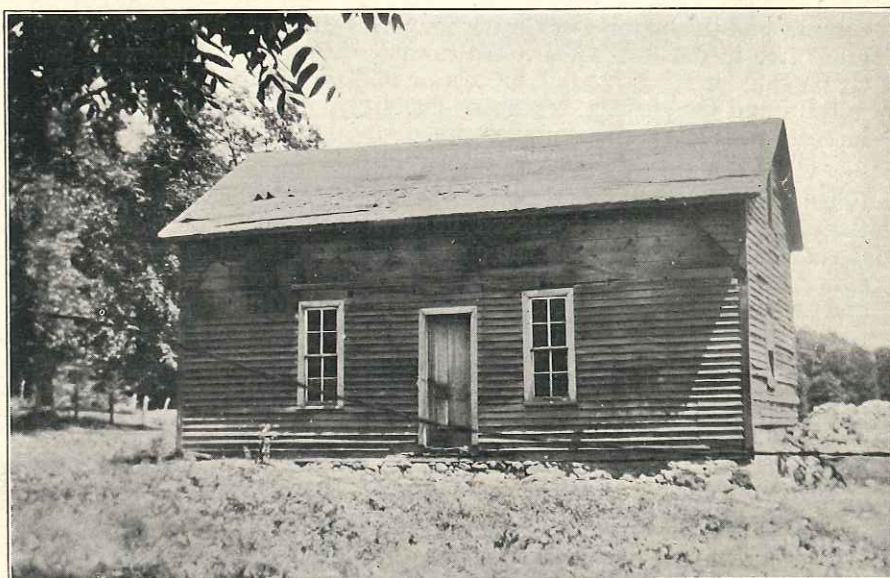
Das ist auch die Ursache und der Zweck weshalb der Frauenverein der St. Markus Gemeinde zu Symco am 26ten Oktober 1919 gegründet wurde. Während den 11 Jahren hat dieser Verein viel Gutes gethan, ganz besonders in diesem Jubelsjahr haben diese wenige Frauen über \$1,300 zur Schmückung der Kirche beigetragen. Gott wird es am Jüngsten Tage offenbaren welchen Gefallen Er an ihrer Arbeit hatte. Der Herr segne und erhalte diesen Verein zu seiner Ehre und zum Wohl dieser Gemeinde.



LADIES' AID—ORGANIZED 1919

History of St. Mark's Evangelical Lutheran Congregation at Symco, Waupaca County, Wisconsin

In the thirteenth chapter of the evangelist St. Matthew we find, that Jesus compares the true believing, Christian church with a mustard seed, for He says, "The kingdom of heaven is like to a grain of mustard seed, which a man took, and sowed in his field; which indeed is the least of all seeds; but when it is grown it is the greatest among herbs, and cometh a tree, so that the birds of the air come and lodge in the branches thereof." So also is the growth of the true believing, Christian church here on earth. Usually, we find a very small beginning, which later develops into a large church. Let us, for example, view the history



HOME OF LUDWIG PICKRUHL WHERE FIRST SERVICES WERE HELD

of the old testament church. How small was the number of God's children in the garden of Eden! Only two began the kingdom of God, that is, the true believing church here on earth. During the time of Noah, we find only eight souls, and later at the time of Abraham, a few more were the contrivers of God's kingdom here on earth. However, during the course of time, through the grace and benediction of the

Almighty; this small kernel grew to a large tree, whose branches afforded protection for the multitudes of Israelites.

No less renowned was the history of the new testament church. Merely twelve disciples and a few women constituted the first congregation. However, the first Pentecost added 3,000 souls to this small flock. Indeed, the church of Christ was a small mustard seed in the beginning, which grew into a large tree. For we find, that after fifty years, the sweet and saving Gospel of Christ had, through the aid of God's holy Spirit and the faithful work of the apostles and other disciples of Christ reached the greatest part of the then-known world. Yea, in which true-believing church many nations of today find grace and joy from the same beneficent God.

Likewise, the members of the St. Marcus congregation have great reason to join in thanking their God, in particular this year, the jubilee year of their own true-believing, Christian church. For, if we note the small beginning just fifty years ago, when eleven families began this local congregation, which now numbers 150 families, we can surely comprehend this parable of Christ; for the mustard seed has grown to a great tree in our own midst. We cannot, therefore, do otherwise but thank God for His grace and protection and appreciate the work of His faithful and God-fearing servants. Certainly, the Lord has helped us hitherto with His surpassing pleasure.

When the first German-Lutheran settlers came to Town Union (village Symco) they found no true-believing Lutheran church. They, therefore, were obligated to attend the services of the St. Paul's congregation at Manawa. But soon the complaint arose, that the roads in the spring and fall of the year were very poor and oftentimes impassable, and under such conditions too far, so that they could not regularly attend the divine services every Sunday. Therefore, several members implored the Rev. J. J. Walker to preach at Symco. He gladly accepted this invitation. And we find him earnestly gathering the sheep of the fold in and about Symco. His first service was conducted in the spring of the year 1879 at the home of Ludwig Pickruhl. Later, services were held in a schoolhouse. The next year marked the founding of a new congregation in this community.

On the first Sunday after Easter, in the year 1880, the Reverend J. J. Walker presented a constitution for the new congregation to those members, who had now left St. Paul's congregation at Manawa in order to establish this parish. After this constitution was a subject of discussion in several meetings, it was finally adopted. And on the 18th of July, 1880, it was signed by the following members:

- | | |
|----------------------|---------------------|
| 1. Ludwig Pickruhl | 6. Reinhard Roenz |
| 2. Julius Hermann | 7. Julius Fietzer |
| 3. Rudolf Tischler | 8. August Hermann |
| 4. Michael Proechel | 9. Gottlieb Hermann |
| 5. William Steinbach | 10. Carl Hermann |
| 11. William Riske | |

A total of forty-six souls constituted the beginning of this parish. Two of the charter members are still in our midst and have the privilege of enjoying the fiftieth anniversary of their church. Both they and we thank God for His unceasing mercies.

Building of the Church, 1881

Already in the following year after the organization and election of officers, the building of a new and more accommodating church occupied the minds of the members. So, in the regular meeting of February 20, 1881, it was moved and carried to erect a new church at Symco with the following dimensions, 30x20x14 feet. And on the third Sunday in Advent of the same year the new church was dedicated to the services of the Lord. This was certainly an occasion of great joy for the members of the congregation. Undoubtedly many rejoiced with the psalmist David, by saying, "How amiable are Thy tabernacles, O Lord of hosts!" Ps. 84, 1.

Pastor J. J. Walker, 1879-1884

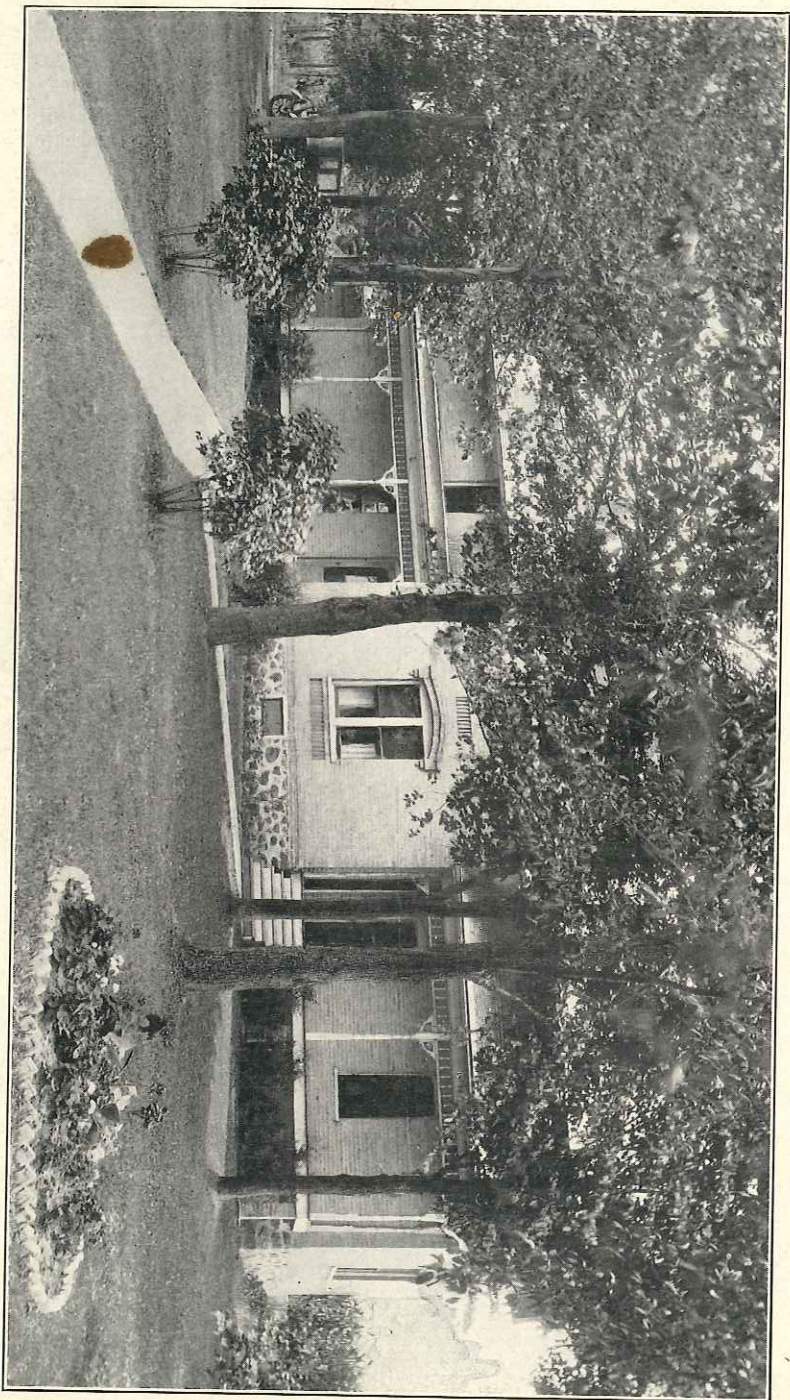
Under the faithful guidance and earnest work of this pastor the blessings of the Lord dwelt upon this congregation. The number of voting members increased continually, for the congregation had grown to sixty-five voting members within these few years. The blessing of the Lord was truly in their midst. But since Pastor J. J. Walker had to attend to eight or nine parishes, his field of work became too large for one man. He, therefore, urged the congregation to strive for a consolidation with its sister congregations at Manawa and Bear Creek, so that they could call their own pastor. These congregations consolidated and extended a call to the Reverend R. J. Jank in the year 1884. The organization of these three parishes did not only assure regular divine services, but also granted the children more religious instruction.

Pastor R. J. Jank, 1884-1891

Pastor Jank was duly installed in the fall of the year. Now it was possible, through the untiring efforts of the pastor to conduct more services in this parish, and to impart more religious training to the children. Through the efficacy of the pastor the congregation had grown in numbers, in so much, that the congregation saw it necessary to build a new and larger church. On the twentieth Sunday after Trinity, 1890, it was decided to begin with the construction of the new edifice the following spring. But before the construction work was begun, Pastor Jank received a call to Orlington, Minnesota; which he accepted in the spring of 1891. The congregation at Manawa now called their own pastor; leaving Symco and Bear Creek in the consolidation. These two congregations extended a call to the Pastor D. Jaeger of Pleasant Plaines, Illinois.



REV. G. H. KITZMANN AND FAMILY



PARSONAGE—ERECTED 1898

Pastor D. Jaeger, 1891-1899

Pastor Jaeger seemed to be a very fitting man for this congregation and its condition. He soon became accustomed to the plans of his predecessor and of the new congregation, which enabled him to continue the work with great success. For during his pastorate in this congregation, the present church, school and parsonage were built to the honor of God and the welfare of the coming generations. May God be praised in time and in eternity. The congregation soon became self-sustaining and decided to call its own pastor. On the 5th of October Pastor F. L. Karth was called as pastor to this congregation.

Pastor F. L. Karth, 1899-1906

Pastor Karth labored conscientiously among the members. He sought for the welfare of the souls of each and every member very earnestly. This, however, caused great difficulty. Nevertheless, the congregation flourished. A Sunday school, a mixed choir, and the painting and interior decorating of the church were some of the remarkable achievements during his stay. For the blessing of the Lord rested upon his work. But in the year 1906 he received a call to the old peoples home at Wauwatosa. He accepted, and within fourteen days left for his new calling. Pastor Jaeger of Bear Creek took charge of the vacancy until a new pastor could be called. The call was tendered to Pastor Treff, who accepted.

Pastor M. A. Treff, 1906-1909

Pastor Treff appeared to be differently minded than his predecessor, and, therefore, did not have as many obstacles to overcome. During his thirteen years of pastorate we find no remarkable or noteworthy achievements. Congregational affairs seemed to take a natural and easy-flowing course. Finally, on the 22nd of June, 1919, the congregation decided that Pastor Treff should exchange parsonages with Pastor Richter of Amherst, Wisconsin. This was a smaller charge and could more easily be taken care of by an elderly pastor as Reverend Treff. Pastor Treff, therefore, resigned his charge and Pastor B. O. Richter was called. Later, Pastor Treff accepted the call to Amherst. This exchange was sponsored by the mission director, Breihahn.

Pastor B. O. Richter, 1919-1921

There is no doubt as to the activeness and alertness of Pastor B. O. Richter. He would not tolerate the quiet and unaggressive atmosphere which prevailed over the congregation. For a standstill is a drawback in the aggressiveness of a parish. He, therefore, immediately organized a men's club, the ladies' aid society, and a choir; so that life was restored unto the seemingly dead parish. In particular we note, that his better judgment noticed, that the small reed organ in the large church was



CONFIRMATION CLASS

entirely too small to provide the required volume. So a two-manual pipe organ was purchased from the Hinner Organ Company for the sum of \$3,300, and dedicated to the services of the Lord. Progress under such leadership was very noticeable, even by the devil, who could and would not tolerate such growth in the Lord's kingdom. He, therefore, sought ways and means to hinder the progress. And, sad to relate, the leader of the congregation committed an unwise act, which reflected upon his character and finally lead to his resignation. Pastor Jaeger was again called upon to fill the vacancy until a new pastor could be called. The congregation extended calls to the Pastors Ramlow and Otto Hattstaedt, both, however, refused. The third election fell to Reverend G. H. Kitzmann, who accepted and was installed on second Christmas day in the year 1921 by Pastor D. Jaeger.

Pastor G. H. Kitzmann, 1921—

Although every faithful pastor and every earnest congregation member strives to reach the goal of perfection in congregational affairs, nevertheless there is constant room for improvement. Therefore, the undersigned has during the past nine years, endeavored to improve those congregational affairs, which were in need thereof. During his pastorate the mission money has increased to four times its previous sum, which was chiefly made possible through the introduction of the envelope system. In 1924 the congregation joined the Missouri Synod, and was privileged to send its first representative to the district convention at Wausau. In the school not only religious instruction was continued, but the required county course was introduced. In 1923 the congregation called its first permanent teacher, Mr. Carl Luhmann. More exact church-discipline has been practised. The buildings of the congregation have been repaired and improved upon; and electricity now furnishes light and power in all the buildings. In the year 1929 the church was redecorated, and colored windows now take the place of the plain-glassed windows.

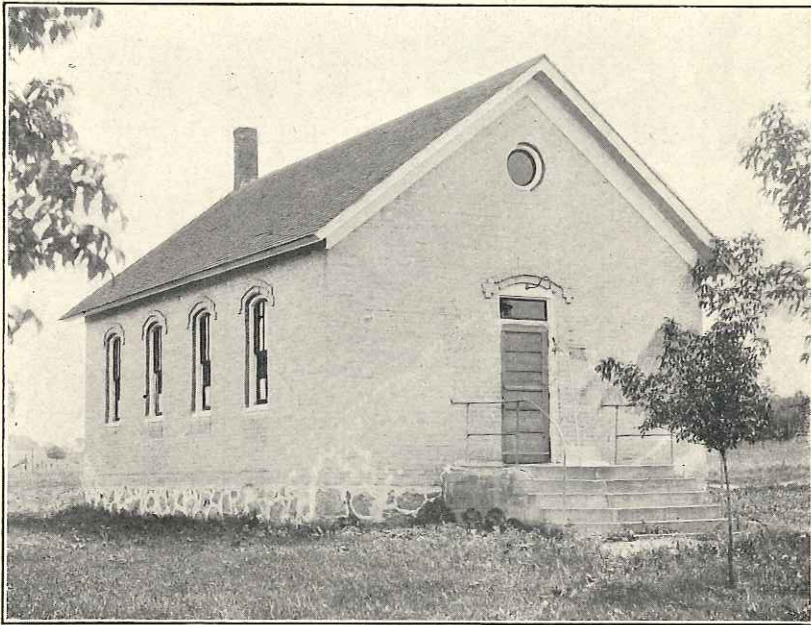
For all the good, which this congregation has enjoyed during the past fifty years, it has great reason to thank God for His mercy and blessing, which He so generously bestowed upon them. His Word has not been preached in vain. The work of His servants has greatly been blessed. The Holy Ghost has, through the preaching of the Word, worked faith in the hearts of the listeners. This must be confessed by the congregation to the glory of the triune God; Father, Son and Holy Ghost.

Upon looking into the future we pray:

Abide with richest blessings
Among us, bounteous Lord;
Let us in grace and wisdom
Grow daily through Thy Word.—AMEN

History of our Christian-Day School

The subject of Christian education was not discovered by man, but revealed by God. God says, "And these words, which I command thee this day, shall be in thine heart; and thou shalt teach them diligently unto thy children." (Deut. 6, 6 and 7). Therefore, the Jewish children were to be educated in the words of the Lord, hence a Christian education was to be imparted to them in all earnestness and diligence. We, therefore, find in the history of the Jewish nation, wherever the Israelites resided, they began the synagogue, or school, for the purpose of meeting this obligation toward their children.



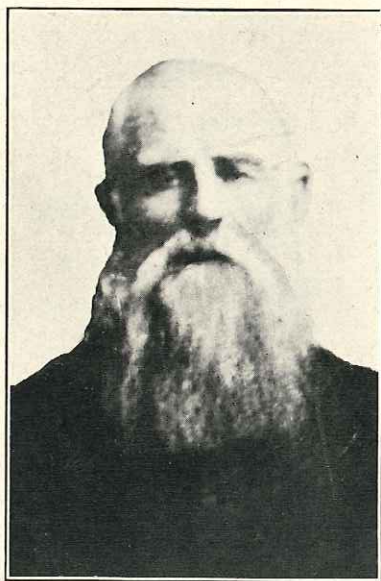
SCHOOL BUILDING—ERECTED 1897

In the new testament Christ did not lessen the stress and earnestness of this command, but expressly tells us in Matthew 28 v. 19, 20 to go and teach all nations; by teaching them to observe all things whatsoever I have commanded you. Again He earnestly pleads with all Christians, saying, "Suffer the little children to come unto me and forbid them not; for of such is the kingdom of God." (Mark 10, 14). This command of Christ was also carried out by His apostles and other disciples throughout the first centuries. Later in the fourteenth and fifteenth century we find that Luther, our great reformer expressed his

views on Christian education, by saying, "Where the Gospel does not rule, I would council no man to send his child." The Lutheran pioneers of our synod in this country also realized the need of establishing nurseries of Christian education and began the establishment of Christian-Day schools. These schools, next to the grace of God, have been the cause for the growth of our synod here in this country.

May the good shepherd ever continue to shower his blessings upon these, our nurseries of Christian education, so that the minds and characters of the little ones may be moulded into a God-fearing nation.

Therefore, a few years after the organization of the congregation, we find the beginning of school history. Due to the enormous mission work of the pastor, the services of Mr. Fred Koehn were secured. He



TEACHER F. KOEHN

had formerly taught at Belle Plaine for several months, and since he was now a resident of Symco; he was to assist Pastor Jank in the religious instruction of the children. German reading and writing and some arithmetic were also imparted to the needy minds.

It is often remembered by the men and women of today, who were the boys and girls of that time, how the melodious strains from the teacher's violin would lead in the singing class. So for many years school was conducted in the old church building. And finally, on the 11th of July, 1897, it was decided to erect a new school building north of the newly erected church. The dimensions of the same were to be 36 by 22 feet, with a hall 5 feet in width; the height of the classroom

was to be 10 feet. Four windows on the south and north sides served to illuminate the room. In the fall of the same year both pupils and teacher were privileged to enter into their new domain. Great indeed, must have been the children's joy for they now could say with the psalmist David, "Lord, I have loved the habitation of Thy house, and the place where thine honour dwelleth." (Ps. 26, 8). Here in this newly erected building teacher Koehn labored for two years very earnestly. For, as history relates, for fifteen years he faithfully attended



MISS TREMPPE

to the duties of schoolmaster in this congregation. We are assured that the word of the prophet Daniel in the twelfth chapter in verse 3, where he says, "And they that turn many to righteousness shall shine as the stars forever and ever," were also fulfilled in this faithful servant.

The first school board members on record were the Messrs. August Arndt, Julius Fietzer and Julius Marquard.

In the year 1899, when the congregation extended a call to Reverend Karth, he was obliged to teach school. But due to his large pastoral duties, his wife taught the greater part of the time. For seven years both continued in the schoolroom, imparting the necessary religious instruction to the lambs of Christ's fold. This instruction in religion also continued during the Reverend Treff's pastorate. Six months of catechism and bible history instruction were devoted to the children of confirmation age. German reading and writing completed the work of a half a day in the Christian school. Indeed, very sparsely was

instruction in the divine word imparted. Due to the reverend's ever increasing age and his great field of work in the ministry, the congregation was obliged to call a teacher. The call was extended to Miss Trempe, who for three years conscientiously taught the children of this parish. Her assistance to the pastor was a great aid in giving the children more knowledge of God's word.

Miss Trempe was succeeded by Miss Gutekunst, who taught for one year, then following a call to Manawa.



MISS GUTEKUNST



TEACHER BUKOWSKI

With the coming of Pastor B. O. Richter in the year 1919, a full time day school was begun. The services of the student teacher Bukowski were secured. He began to extend the field of learning in the secular branches. The school now began to mold itself into a day school of both religious and secular teachings. However, Mr. Bukowski's stay was all too short for the splendid work he had begun. He was succeeded by the Reverend Richter's daughter in the following year. It was in this year that the school term was set to eight months. Miss Dorothy Richter, however, taught only one term, due to the resignation of her father from this parish. A few sunny years had thus been experienced in our day school; but there came a cloud over the progressing horizon. For in the year 1921, the congregation decided that only religion and German should again be taught. So the vacancy pastor, Reverend D. Jaeger, secured the services of Miss Edna Born, who faithfully instructed the fold entrusted to her in these two branches of learning. The next

year she entered the holy state of matrimony and left with her husband, the Reverend Jauch, for the South American mission fields. The school year of 1922-1923 was occupied by the Mrs. Reverend Kitzmann, who very faithfully filled the vacancy of this year.

On the 8th of April, 1923, the congregation decided to call its first permanent teacher. The call was accepted by teacher Carl Luhmann. The school term was now set to nine months. Teacher Luhmann began to organize grades in the school. Besides religion all the secular branches of the required county course were instructed. So during this school year of 1923-1924, the foundation toward a rural graded school was



MISS DOROTHY RICHTER



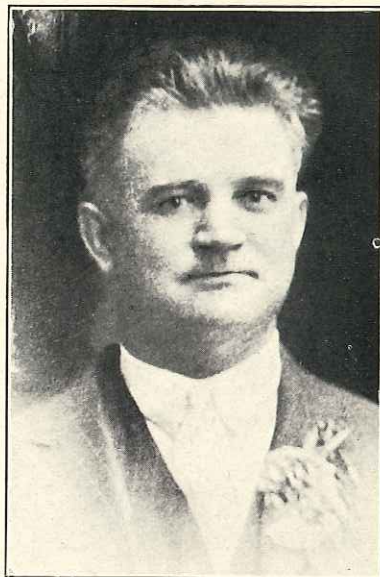
MISS EDNA BORN

laid for our Christian school. However, in the July meeting of the following year, the congregation again decided, against the protest of both teacher and pastor, to have only religion taught in our growing school. This move did not appeal to the progressiveness of teacher Luhmann, so he resigned, leaving the school without a teacher. So the pastor continued to teach the school until Christmas. It was now decided to secure another teacher. And teacher J. Feustel accepted the position. In this man we find an earnest and progressive teacher. His activeness began to revolutionize things in and about the school room. He saw to it that the necessary equipment for a school room was purchased. The piano, teacher's desk, maps, charts and a globe were some of these necessary things and are still in use today. The standard of the school was raised considerably. The enrollment was

increased to twice the former number. Certainly, the blessing of the Lord rested upon this man's faithful work. But after the school term of 1926 Mr. J. Feustel left his charge. During the following year no day school was conducted. A religious school on Saturday was held by the Reverend G. H. Kitzmann. During the summer of 1927 the congregation decided to call a student teacher. Through the venerable district president, H. Daib, the services of Mr. Flachsbart were secured for one year. This student teacher began to build up the day school again. Under his administration the sixth and seventh graders also wrote their



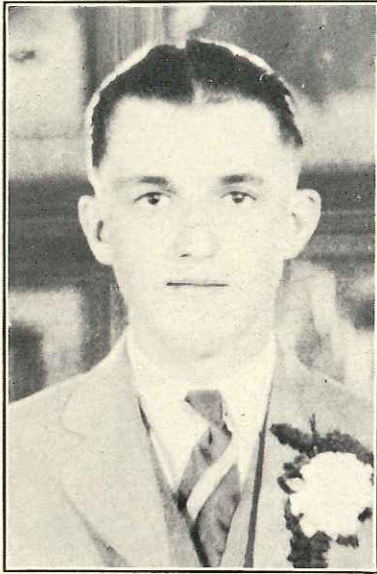
TEACHER C. LUHMANN



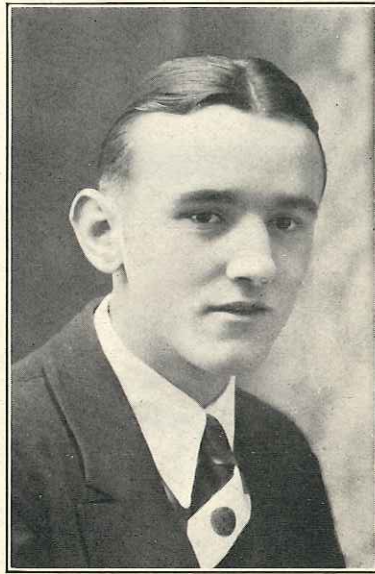
TEACHER J. FEUSTEL

county examinations. The following year student teacher H. Lipske continued the work of his predecessor. Beginning with seventeen pupils the enrollment was increased before the end of the year to thirty-two. Through faithful work and diligent prayer the blessings of the Lord did not remain hidden. For the 1929 school term ended with four county graduates, and twenty sixth and seventh graders received their well earned credits from the county superintendent. The student teacher, H. Lipske, also has the privilege of being the schoolmaster of the jubilee year. It was in May of this year that the Christian day school set a new mark, namely thirteen graduates receiving their county diploma, entitling them to enter any high school of the county without examination. Mission money of the children reached a very high standard during the anniversary year. The school library was increased in volume through the kind donations of the ladies' aid and several

generous friends of the school. However, these are only the achievements for the temporal welfare of the little lambs in Christ's fold. For besides teaching all the required county branches the word of God holds its prominence in our school. For nine periods a week are devoted to religious instructions, namely, three catechism, two Bible history, two church history and two bible reading periods. Both pastor and teacher ascribe this great success to the manifold blessings of the Lord, and the earnest prayers and faithful work of His servant. For which



TEACHER W. FLACHSBART

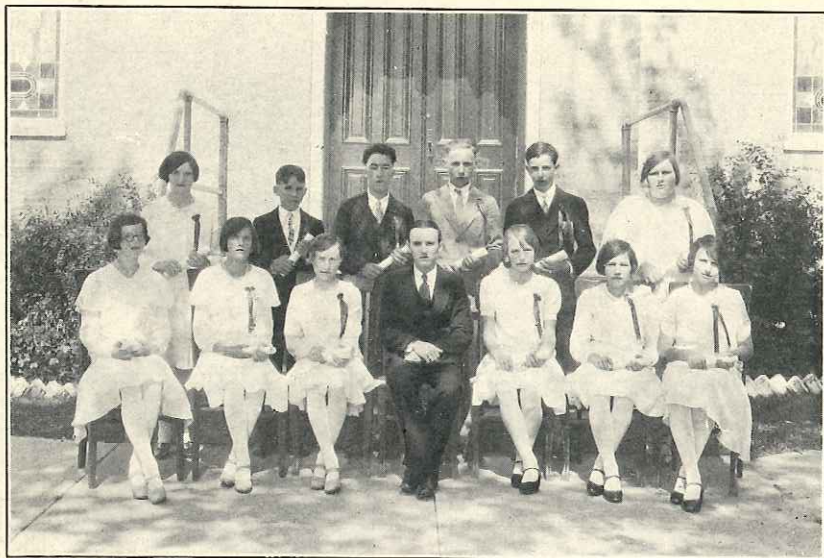


TEACHER H. LIPSKE

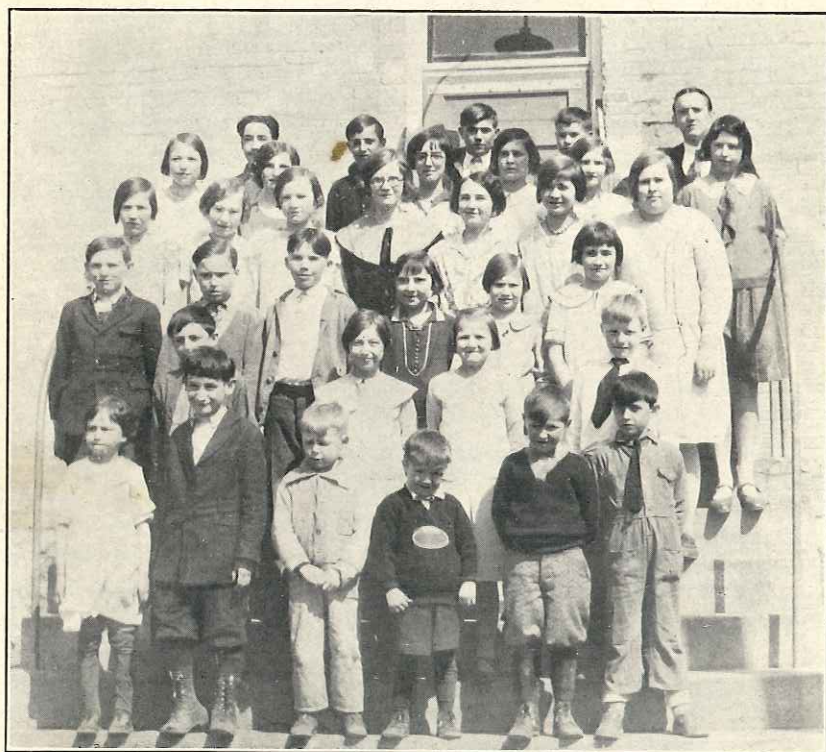
the congregation during this anniversary year has great reason to be thankful to the good shepherd of the little ones.

And may you, dear Christians, at all times work for your Christian school, by praying that Satan may not overpower it, by supporting it financially, and by suffering your little children to come unto Him, the Master, who to Peter said, "Feed my lambs." Let this be our watchword through ages to come, "Only Christian schools for Christian children." And with folded hands pray to the One who also died and dearly loves the little ones.

O, gracious Saviour, gentle Shepherd,
Children all are dear to Thee;
O bless the parents, who give heed
Unto their children's foremost need.



CLASS OF 1930



SCHOOL OF 1930

And weary not of care or cost
 To them and heaven shall none be lost.
 Then within Thy fold eternal
 Give Thy lambs a resting place;
 Feed them in Thy heavenly pastures,
 Crown them with eternal bliss.—AMEN

Officers of the Congregation in this Jubilee-Year

PASTOR

G. H. KITZMANN

CHURCH BOARD

GUST. RISKE ARTHUR JANKE E. E. QUIMBY WM. MUNDT

TRUSTEES

ED. PRILL RICHARD STEINBACH WM. SCHWANKE

SCHOOL BOARD

ALBERT GRUEL ADOLPH SCHUELKE WM. HANDRICH

President - - - - -	LEO PREUSS
Secretary - - - - -	LOUIS JANKE
Treasurer - - - - -	ALBERT JAHSMANN
Organist - - - - -	LEON QUIMBY
Janitor - - - - -	JOHN ROLAND

COLLECTORS

JOHN ROLAND ED. PRILL GUST. FIETZER RICHARD FIETZER

VOTING MEMBERS

ARTHUR ARNDT	JULIUS EBERT	RUD. FIETZER
ARTHUR BRAUN	HENRY EBERT	RICH. FIETZER
L. J. BRAUN	JOHN EISNER	WM. FIETZER
ALBERT BRAUN	ALBERT EISNER	ALBERT GRUEL
JOE BRENNENSTUHL	ALBERT FEHSER	ROBERT GRESSEN
H. BONIKOWSKI	FRED FEHSER	WM. HANDRICH
OTTO BUROW	LOUIS FEHSER	ADOLF HEIDEMANN
RUDOLF BEYER	LOUIS FERG	EDW. HEIDEMANN
LOUIS BEYER	ROBERT FERG	HENRY HEIDEMANN
GUST. BEYER	ALBERT FERG	FRANK HERMANN
GUST. BARTEL	LOUIS FENSKE	GUST. HERMANN
HERB. DENNISON	JOHN FENSKE	WM. HERMANN
FRED DREGER	CLAUS FLINK	AUGUST HERMANN
LEO DREGER	CLARENCE FLINK	JULIUS HERMANN
ERNST DICKMANN	CARL FROEMMING	EDW. HERMANN
EMIL DIERTERT	EMIL FIETZER	EMIL HENSCHEL
JOHN DRATH	E. E. FIETZER	OTTO HENSCHEL
ALBERT DRATH	JULIUS FIETZER	EMIL HASS
ART. DALLMANN	GUST. FIETZER	WM. HASS
EDW. ERNST	ALBERT FIETZER	ARNOLD HASS
FRED EBERT, SR.		FRANK HORNBURG

REINHARD HEIN
 FRED HEDTKE
 ALBERT JAHSMANN
 WM. JAHSMANN
 ERNST JAHSMANN
 CARL JASSMANN
 ARTHUR JANKE
 EMIL JANKE
 REINHARD JANKE
 LOUIS JANKE
 WM. JESKE
 EDW. JESKE
 ABRAHAM JOSIE
 CARL JAEGER
 HENRY JOHNSON
 GEORGE JOHNSON
 FRED KLATT
 GUST KLINGBEIL
 WM. KUSCHEL
 JOHN KUTSCHENREUTHER
 MARTIN KOSTRZAK
 OTTO LICHTFUSS
 HERMAN LANGE
 EARL LOZIER
 EMIL LUCKJOHN
 EDW. LUCKJOHN
 WM. MUNDT
 PAUL MUCH
 WM. MILLER
 ERICH MILLER

EMIL MILLER
 JOE NEMMETZ
 ALBERT NEMMETZ
 FRANK NEMMETZ
 D. NORTHHOLZ
 JOE OSTERLING
 ALBERT PRILL
 EDW. PRILL
 THEO. PRILL
 WALTER PRILL
 LUDWIG PRILL
 GOTTLIEB PREUSS
 GEORGE PREUSS
 LEO PREUSS
 OTTO POLZIN
 WM. PETHKE
 ARTHUR PIETZ
 E. E. QUIMBY
 AUG. ROEHL
 EDGAR ROHDE
 EDW. RHODE
 ED. ROHDE
 GUST RISKE
 ERNST RISKE
 EDW. RISKE
 HENRY ROLAND
 JOHN ROLAND
 LUDWIG RAST
 WM. REINECK

HENRY REINECK
 ALBERT REINECK
 ALBERT SEGER
 GUST. SONNENBERG
 OTTO SCHOENROCK
 JOHN SCHOENROCK
 WM. SCHWANKE
 MAX SCHROEDER
 FRANK SCHRAMM
 AUG. SCHMOLL
 ADOLPH SCHUELKE
 HENRY SCHUELKE
 WM. STEINBACH
 ALBERT STEINBACH
 EDW. STEINBACH
 RICHARD STEINBACH
 GUST. SCHMIDT
 AUG. TRAUGOTT
 LEONARD TRAUGOTT
 EWALD TOHM
 FRED TOHM
 GUST TELLOCK
 FERD. TSCHERWALD
 FRED VOSS
 MAX VOSS
 HERMAN VOLZ
 EMIL WINTER
 LOUIS WINTER
 CARL WERTH
 GUST. WIESE

CONTRIBUTING MEMBERS

WM. BRENNENSTUHL
 MARIE BAHR
 EMILIA SCHUELKE
 PAUL WEGENER
 AUGUSTA HEIDEMANN
 EMILIA HERMANN
 OTTILIA DRETHKE
 EMILIA SCHMOLL
 MARTHA BALDWIN
 MRS. O. BALDWIN
 TINA KRAUSE
 EMMA KRAUSE
 CELIA KRAUSE
 ALMA ORA

MRS. L. STEVENS
 AUGUSTA WIESE
 EMILIA KUEHN
 MRS. W. VANDERGATE
 WILHELMINA FIETZER
 CHAS. HEIDEMANN
 HENRY SPLITZ
 MRS. BECKER
 ART. BECKER
 LAURA FRAZIER
 MARTHA KRUEGER
 EMILIA FERG
 BERTHA BORCHARD
 IDA DREW

MARTHA COLWELL
 IDA BAHR
 MINNIE MILLER
 ELILIA GANSKE
 ALBERTINA JASSMAN
 ARNOLD DRETHKE
 ALVIN SCHOEN
 REINHARD SCHOEN
 ERVIN SCHOEN
 RALPH ZIMMERMANN
 MARVIN JANKE
 ANNA SCHURTZ
 LILLIAN POSTEL
 ART. HENSCHEL

LADIES' AID

President - - - - -	Mrs. G. KITZMANN
Vice-President - - - - -	Mrs. A. JANKE
Treasurer - - - - -	Mrs. A. ARNDT
Secretary - - - - -	Mrs. E. ROHDE

Mrs. G. SCHUELKE
 Mrs. O. SCHOENROCK
 Mrs. G. RISKE
 Mrs. J. NEMMETZ
 Mrs. E. FIETZER
 Mrs. L. BRAUN

Mrs. A. BRAUN
 Mrs. BORCHARD
 Mrs. J. BRENNENSTUHL
 Mrs. L. PREUSS
 Mrs. A. ARNDT
 Mrs. H. BONIKOWSKI

Mrs. G. KITZMANN
 Mrs. A. NEMMETZ
 Mrs. A. JOSIE
 Mrs. H. FREZIER
 Mrs. WM. JAHSMANN
 Mrs. WM. KUSCHEL

MRS. M. SCHROEDER
MRS. E. LUCKJOHN
MRS. J. EBERT
MRS. F. SCHRAMM
MRS. R. FIETZER
MRS. F. KLATT
MRS. A. JANKE

MRS. E. ROHDE
MRS. E. PRILL
MRS. WM. HANDRICH
MRS. A. HEIDEMANN
MRS. O. LIGHTFUSS
MRS. E. JAHSMANN
MRS. F. PRILL
MRS. A. JAHSMANN

MRS. C. FLINK
MRS. R. JANKE
MRS. A. SEGER
MRS. J. SCHURTZ
MRS. A. GRUEL
MRS. E. E. FIETZER
MRS. G. FIETZER